

The global warming and climate change its relation to: Sustainability

¹ Richa Ranjan, ² Sunita Mishra, ³ Asutosh Mishra

¹ M.Sc Student, Human Development & Family Studies, School for Home Science, BBAU, Lucknow, Uttar Pradesh, India

² Professor, Human Development & Family Studies, School for Home Science, BBAU, Lucknow, Uttar Pradesh, India

³ Ph.D. Student Human Development & Family Studies, School for Home Science, BBAU, Lucknow, Uttar Pradesh, India

Abstract

The global warming one of the most significant phenomena is one of the most significant global phenomena of the 21st in the country. The climate change is natural process but recent related to climate change alarming mainly due to anthropogenic reasons. Climate change has already affected people, their livelihood and ecosystems and presents a great development challenge for the people in developing countries in particular. And attempt has been made to find out the climate change and relation to sustainability.

Keywords: global warming, climate change

1. Introduction

The climate is defined as 'the general or average weather conditions of a certain region, including temperature, rainfall and wind .the earth climate is most affected by latitude the tilt of the earth's axis the movement of the earth's wind belts, and the difference in the temperatures of land and sea, topography human activity, especially relating action to the depletion of the ozone layer is also important factor ^[1].

The climate system is a complex, interactive system consisting of the atmosphere, land surface show and ice, oceans and other bodies of water and living things ^[2].

Climate change has already affected people ^[3]. Greenhouse effect is the phenomenon where by the earth's atmosphere traps solar radiation and is mediated by the presence in the atmosphere of gases such as –carbon dioxide, water vapors and methane that allow incoming sunlight to pass through but absorb the heat radiated back from the earth surface.

Thus the greenhouse gases (GHGs) provide a blanketing effect in the lower strata of the earth atmosphere and this blanketing effect is being enhanced because of the human activities like burning of fossil fuels ect ^[4].

I begin with a quick summary of the basic science by absorbing infra-real or heat radiation from the earth's surface "greenhouse gases" present in the atmosphere such as- water vapor and carbon dioxide acts as blankets over the earth's surface keeping it on average

The existence of this natural 'greenhouse effect' has been known for nearly two hundred years it is essential to the provision of our current climate to which ecosystems and we human and adapted. Dioxide has increased by over 40% and is now at a higher concentration in the atmosphere than it has for millions of year chemical analysis.

Demonstrates that has increase is due largely to the burning of fossil fuels - coal, oil and gas .if no action is taken to these emissions the carbon dioxide concentration will rise during the 21st century to two or three times its pre-industrial level ^[5].

A review of the economics of climate change by lord stern ^[6]. Over the 21st century global average temperature is projected to rise by between 2 and 6 °c (3.5 to 11 °F) from its pre-

industrial level the range represent different ^[7].

So associated with likely warning in the 21st century will be a rate of change of ultimate equivalent to say-half annex age in less than 100 years –a larger rate of changes than for at least 10,000 years .

Adopting to this will be difficult for both human and many eco systems.

2. Methodology

2.1 Research design

Research design is a coherent plan in conducting research which deals with investigation so conceived to obtain answer to research question. Research design is used to conduct research with objectivity of accuracy. The research design is fallowed in the present study is Ex-post facto sectional research design the present study entitled "Sustainable Lifestyle: A Study on Urban Sprawl in Lucknow City".

2.2 Local of the study

The urban areas of Lucknow were selected for the study as it was convenient for the researcher to conduct the study. Two areas Hazratganj and Lalbag were selected.

2.3 Sample

The sample consists of 120, government employee were selected randomly from different place, municipal corporation office, divisional railway corporation office Lucknow in Uttar Pradesh.

2.4 Tools used

Researcher used self-structured questionnaire for assessment of general profile and global warming profile. Questionnaire is used natural things like solar energy, Led etc.

2.5 Procedures

The questionnaire schedule was developed by researcher to collect general information after administration of these tools collected data scored and analyzed statically using ANOVA.

3. Result and discussion

Table 1: Gender of the respondent

	Gender of the respondent							
	Male				Female			
	Mean	s.d	T	p-value	Mean	s.d	t-value	p-value
Environment Sustainability	20.6234	2.51333	-2093	.039	22.2609	5.14532	-1475	.153
Conscious About saving water	22.1429	2.91870	-2383	0.19	24.2174	5.50996	-1.743	0.19
Conscious About saving energy	22.1429	2.91870	-2383	0.19	24.2174	2.911870	-1.734	0.95
Impact of consciousness	29.3636	3.47135	-522	.603	29.7826	3.02950	-562	5.77
Reducing the waste	12.3377	1.97757	-806	.422	12.6957	1.42812	-959	.342
Grand total	106.6104	7.55359	2.813	.006	113.1739	15.24542	-1.993	0.57

The above table shows that the frequency of male and female and the frequency outcome by analyzing a data in SPSS and frequency outcome that male and female government employee. The table shows that majority of 77% male and 23% female in government sector and male and female grand total 106.6104 outcome and female mean grand total 113.1793 and in this table also mention that male t value 2.813 and female t value -1,993 in this table also mention that male and female also p value 006,0057 thus so that male majority in this table.

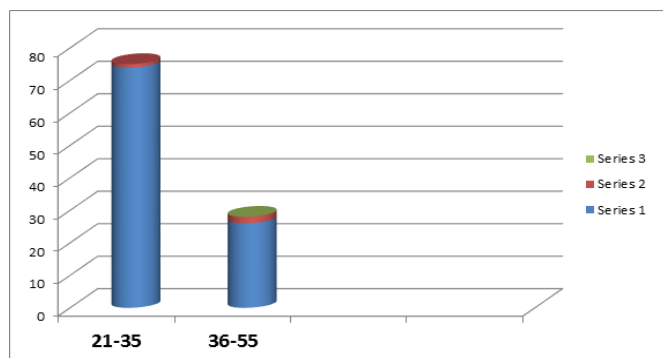


Fig 2: Distribution of respondent according to age

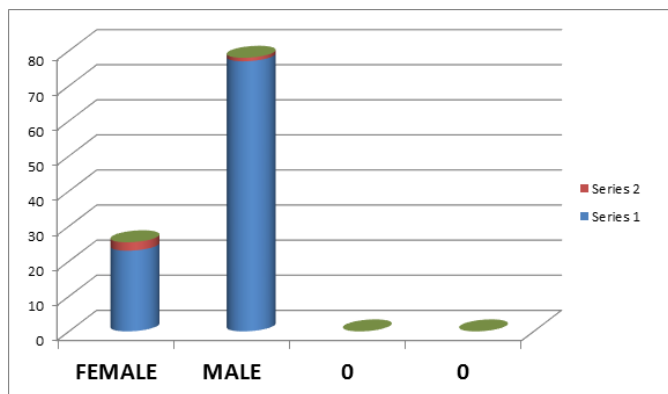


Fig 1: Distribution of respondent according to sex.

The above table shows that in government sector male has 77% female has 23 % thus majority of male in government sector.

Table 2: Distribution of respondent according to age.

Age	Frequency	Percentage
21-35	74	74
36-55	26	26
Total	100	100.0

The above table (4.1.2) shows that the frequency of male and female and the frequency outcome by analyzing a data in SPSS and frequency outcome 74% government employee belong to the age 23-35 age and 26% government employee to 36-55 age of year. Then it was found that majority 74% of respondent were in the age group of 21-35 year.

4. Conclusion

The human activities of increasing world pollution together with the accompanying rapid industrial development are leading to degradation of the environment on a very large scale. The climate system is complex interactive system consisting of the atmosphere.

The greenhouse effect is the phenomenon where by the earth's atmosphere of gases such as carbon dioxide, water vapor, methane, Ethane that allow incoming sunlight to pass through but - absorb the heat radiated back from the earth's surface. This is a very big issue for our country.

5. Reference

1. Global Warming and its impact on climate, Theodore C, Sorensen
3. Climate change and organic agriculture, review paper, Ram Chandra khalal 2009, 10.
4. Global warming climate change and sustainability, Johan Houghton, Fourth edition 2011, 3.
5. Global warming climate change and sustainability, Johan Houghton, Fourth edition 2011, 6